



# COMPANY PROFILE ...

---

BJ Spring Limited

+91 129 2309385  
+91 9311655038  
[www.bjsprings.com](http://www.bjsprings.com)  
[info@bjind.net](mailto:info@bjind.net)



# About Us

With an experience of more than 40 years, BJ Spring is a leading manufacturer and exporter of auto parts. providing amazing products to many customers and having great market value and goodwill in the industry. We deliver Authentic & high-quality products from Leaf Springs, U – Bolts, and Trailer Suspension to shock Absorbers, and thousand of other products. We are supplying to some of the most reputed brands in the Automotive Industry.



AN ISO9001:2015 IATF16949:2016 CERTIFIED COMPANY



**We're currently exporting to more than 80+ countries.**

**B J Spring Limited has an experienced team for taking up the re-engineering, value engineering and design development of Automobile Leaf Springs, Multi and Parabolic types. Changing suspensions form leaf to Parabolic.**

**Supplying Automotive, suspension components & assemblies, for all vehicles like Heavy & Light Trucks & Trailers. We hold expertise in manufacturing all makes of truck & trailer parts.**



# Infrastructure

BJ Spring has a huge setup in the industrial town of Ballabgarh (Faridabad India) that is fully automated and equipped with state-of-the-art machines and in-house tool design, The premises is spacious & well laid out, We are well equipped, and are regularly upgrading to take care of ever-increasing demands. All the products and designs we create are custom-made, to fit the requirements and specifications of each order we receive. we are committed to delivering you the best quality truck & trailer spares. Our products are manufactured according to international standards and requirements. Our QA team also performs rigorous quality checks at each stage and ensures flawless performance & high durability. Each of the products is inspected at every stage of production to ensure that there is no compromise with regard to quality. Your satisfaction is our top priority.

## Our Customer Base

- ▶ **O.E Manufacturers**
- ▶ **Government Institutions**
- ▶ **Trailer Manufacturers**
- ▶ **Merchant Exporters**
- ▶ **After market part dealers**





# Manufacturing Process



## Well Equipped Design Room

We are well equipped with full fledged research & development wing, which is capable of designing, prototyping, testing & final product development through CAD & Dynamic testing facilities.

## Cutting machines



The punch press is used for punching holes, blanking, trimming, bending, & shallow stretching





# Manufacturing Process



## Parabolic Rolling Machine

We have the most modern and fully computerized 3 parabolic leaf spring machines.

The machines are capable of handling steel stripes of up to 62 mm thickness. The walking beam for the parabolic machines uses LPG & induction heating for rolling as fuel and is controlled by PID controllers.



## Eye Rolling machines

The automatic hydraulic eye rolling machines ensures that each and every eye is properly made and there is no oval formation in the eye.





# Manufacturing Process

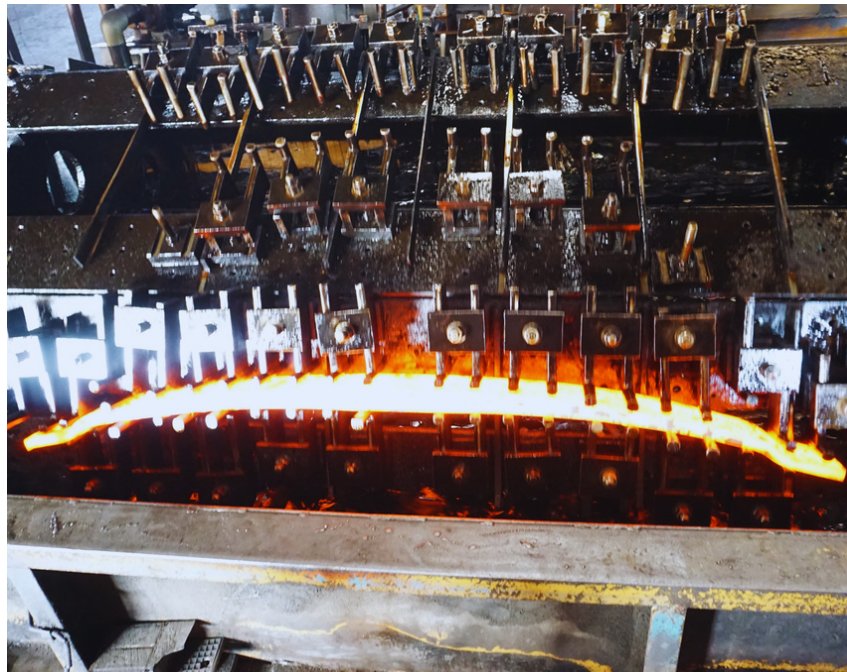


## Walking Beam Furnace

To ensure uniform heating all leaf springs are processed through walking beam and given proper soaking time and temperature through automatic temperature controlling with PID controllers.

## Quenching & Cambering

We have 2 lines for quenching and cambering. In each line quenching is done in a 40,000 litre capacity quenching oil tank, complete with the conveyer and 8 staged cambering tool, so as to ensure the proper camber maintenance. This is done in order to avoid any re-cambering work during the assembly process.





# Manufacturing Process



## Tempering

All leaves are processed through the PID controlled gas fired tempering furnace, so as to ensure uniform tempering of the springs.

## Shot Peening & Stress Peening

We ensure that all the leaf springs are shot peened so as to ensure long life endurance of the springs. The leaves produced are finally tested for load, deflection and endurance.

We also do stress peening for heavy duty applications (like mining) on demand.





# Manufacturing Process

## Lab Testing

We Follow the principal of 100% testing starting from the spectro test of the raw material composition, Hardness testing, load testing and cycle testing.



Load Testing



Endurance Testing



Hardness Testing

## Packaging

Springs are then piled up on the wooden pallets with each layer separated by wooden ribs and lastly covered in an air tight covers.

## Pre Inspection & Dispatchment

Before the consignment is ready for delivery to its final destination. It is properly inspected.

## Grades For Raw Material

The grades of raw material being used by us are per BS, JIS, SAE, DIN & IS standards.

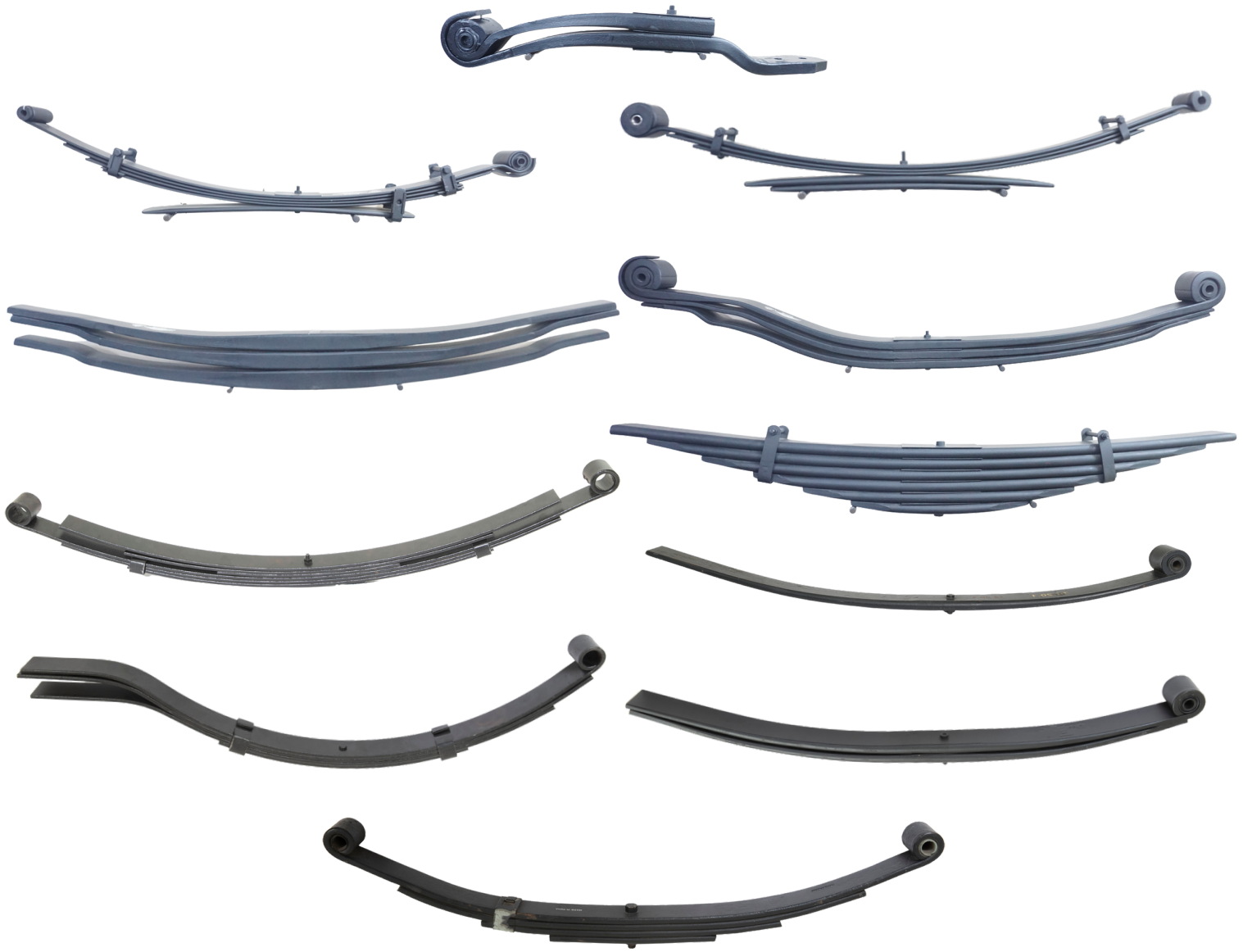
The most commonly used grades are 55 Si7 / 60Si7 / 65Si7 / SUP9 / SUP 9A / SUP 11/ SUP 11 A / EN 45 / EN 45 A / 50 CrV4, however any other grade can be used based upon specific requirement of the customer.

Thickness	4.5mm	68 mm
Width	38.1 mm	150 mm
Length	100 mm	2300 mm
Eye Diameter	10 mm	84 mm
Z Bending Height	10 mm	700 mm



## Our Core Products

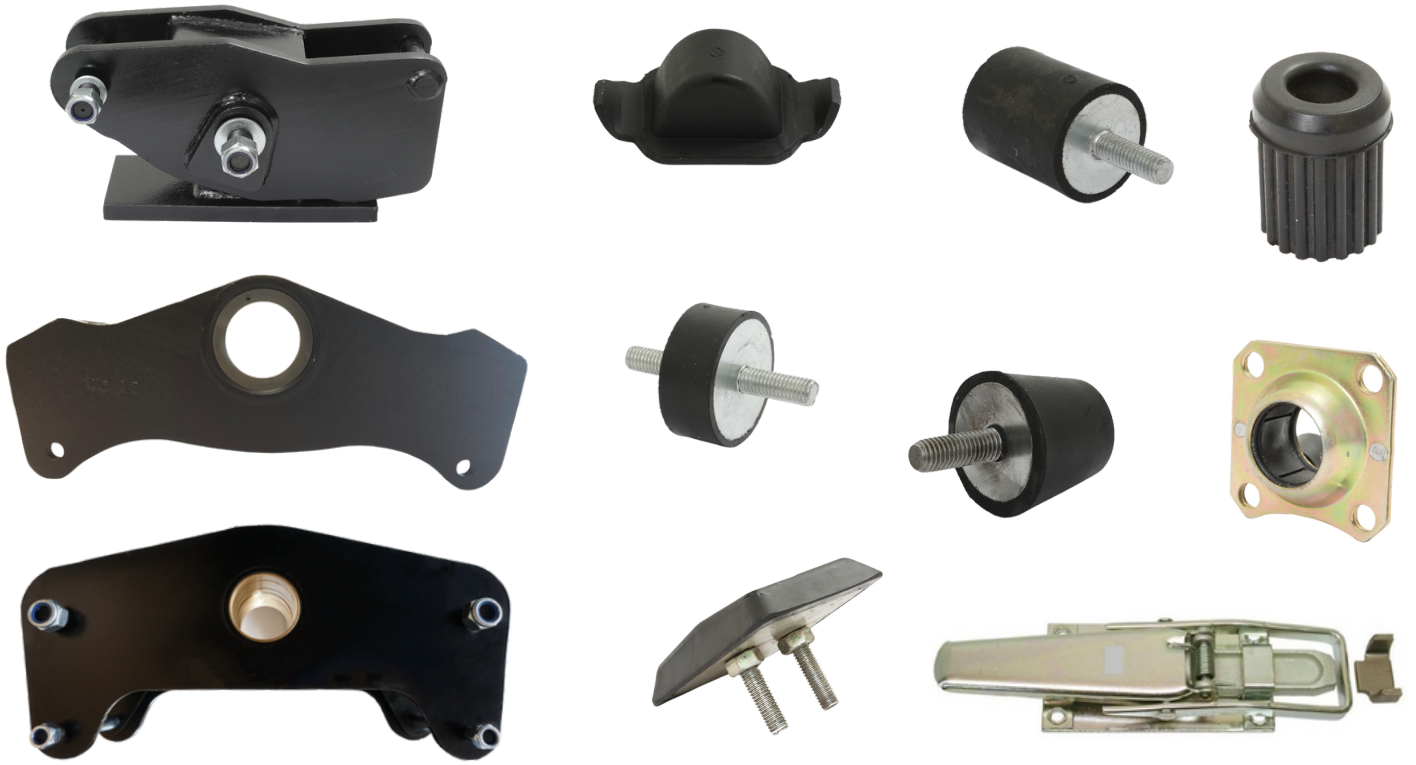
- Leaf Springs - Conventional & Parabolic & Z Type Air Linker Springs For On - Road & Off - Roads Commercial Vehicles
- U Bolts - For Light, Medium & Heavy Commercial Vehicles.
- Centre Bolts - All Shapes & Sizes - Forged & Non Forged For Various Applications
- Trailer Suspension - Complete Kit & Parts ( Fabricated)
- Shockers - Light, Medium, Heavy
- Sheet Metal Components - Equalizer, Front Bracket, Rear Bracket
- Eye Bracket, Axle Plate, Metal Plate, Centre Hanger
- Bushes - Almost all kinds of bushes for trucks & trailers - Silent Block Bushes, Rubber Bushes, Gun metal Bushes & Mild Steel Bushes.
- Stub Axel Assemblies
- Jockey Wheels



## Our Core Products







## Our Core Products

